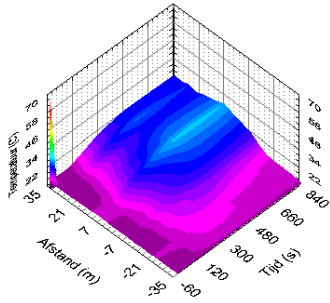


Bijlage IV.12

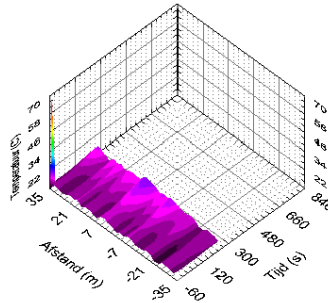
Temperatuurverloop branddetectiesystemen

OE (brand op 5 meter, oost, geen ventilatie), westkabel

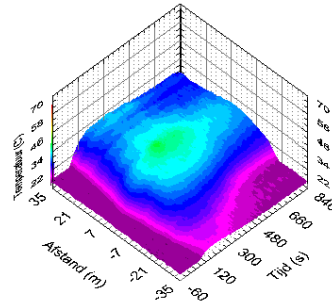
Systeem A



Systeem B

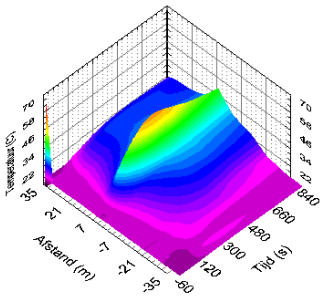


Systeem C

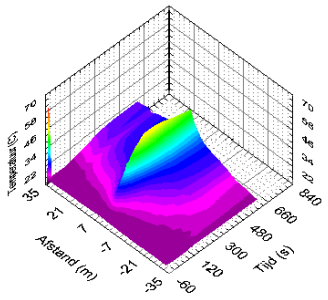


OE (brand op 5 meter, oost, geen ventilatie), oostkabel

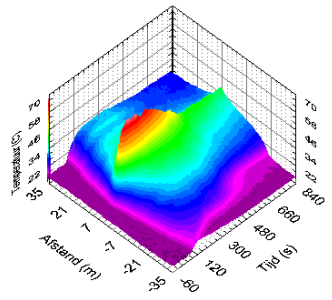
Systeem A



Systeem B

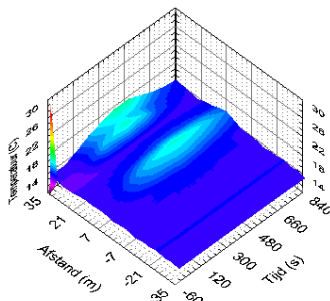


Systeem C

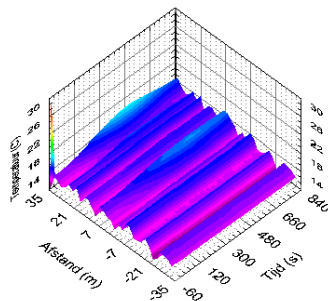


OF (brand op 5 meter, oost, ventilatie 3 m/s), westkabel

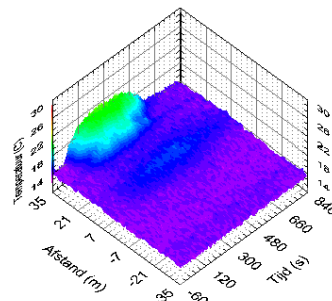
Systeem A



Systeem B

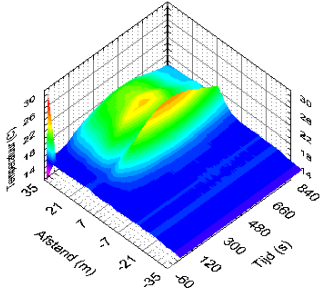


Systeem C

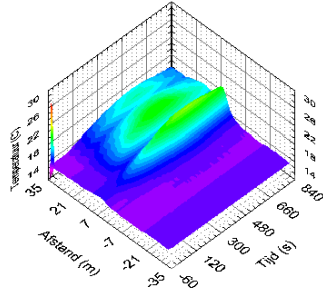


OF (brand op 5 meter, oost, ventilatie 3 m/s), oostkabel

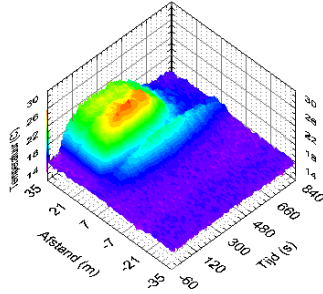
System A



System B

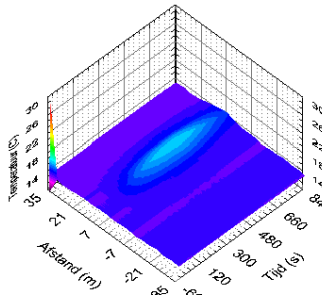


System C

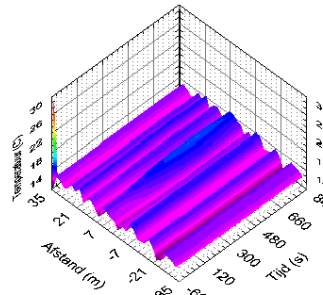


OG (brand op 5 meter, oost, ventilatie 5 m/s), westkabel

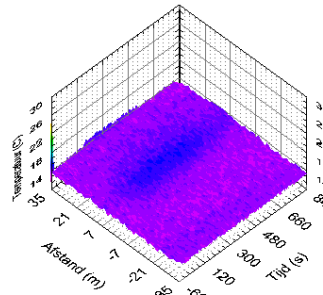
System A



System B

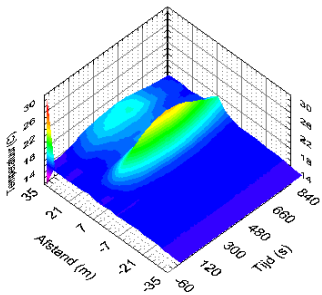


System C

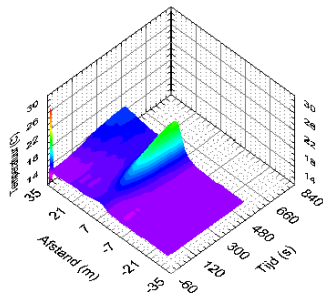


OG (brand op 5 meter, oost, ventilatie 5 m/s), oostkabel

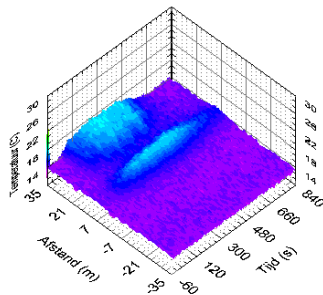
System A



System B

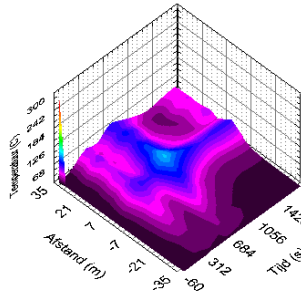


System C

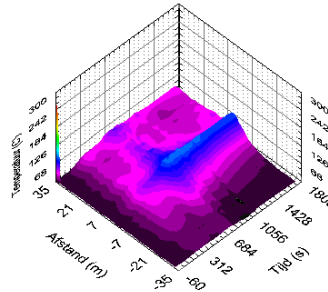


2 (brand op 0.8 meter, oost, ventilatie geschiedt d 0-6 m/s), westkabel

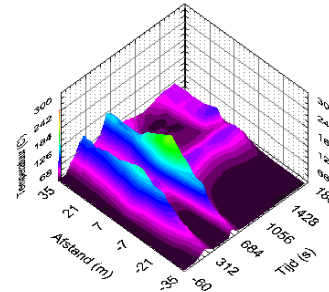
Systeem A



Systeem B

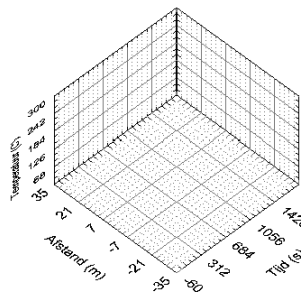


Systeem C

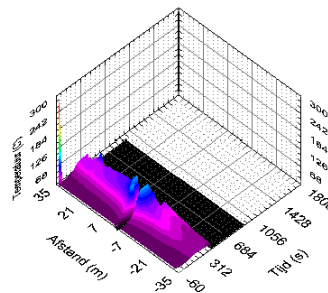


2 (brand op 0.8 meter, oost, ventilatie geschiedt d 0-6 m/s), oostkabel

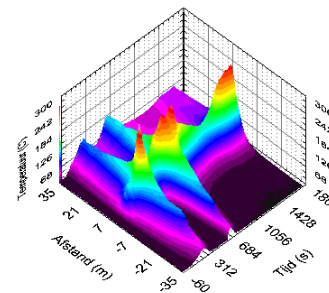
Systeem A



Systeem B



Systeem C



De begintemperaturen voordat het vuur is ontstoken, waren:

- Systeem A: 15°C (sensor gemiddelde);
- Systeem B: 14°C (sensor gemiddelde);
- Systeem C: tussen 13,5 en 15,6 °C (varieert per 10 seconden door meting met glasvezel).

Opmerkingen bij grafieken:

- De grafieken van systeem B-II (aan westzijde) hebben een golvend patroon, omdat de sensoren bij installatie niet gekalibreerd zijn. Nu geven de sensoren kleine temperatuurverschillen die door kalibratie weggeremd worden;
- De grafieken van systeem C fluctueren bij een klein temperatuurbereik, omdat de meetwaarden bij een glasvezelsysteem per meting 1 à 2 °C kunnen verschillen.